

CaddFX As-Built Services

Visual Information Providers... Helping you go Green

As-Built; Record Drawings; Field Survey & Building Documentation Services

These commonly used terms depicts the actual installed configuration and infrastructure of both physical and functional features of buildings and or related building systems for Architectural, Mechanical, Electrical, Plumbing & Security systems.

Businesses seem to overlook the importance of having their data in an "As-Built" condition, because when they need to know where critical data is to respond to an emergency or want to make a change or an addition to their building, they must have proper updated floor plans and documentation.



Knowing the current conditions is a requirement before an Architect or Engineering firm can begin to develop any new or revised construction plans. In addition, these accurate Drawings provide a permanent record of "As-built" conditions and aid as key references for Crisis Management purposes.

As-Built information should be a priority for businesses to maintain their Facilities, which will improve daily operations and the overall maintenance processes. These same "As-Built" drawings and data can also be utilized in a (CAFM) Computer Aided Facility Management System, which will enhance the ability for organizations to protect and track key data such as:

- Property
- People
- Assets
- Operations
- Processes
- Conditions
- Accounting

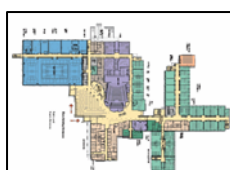
CaddFX Design Services, offers all of the services needed to update a clients Site and Floor plan data. Our team of experts can conduct a field survey of your buildings and floor plans by documenting and depicting the final installed "As-Built" configuration utilizing our laser technology.



Our services also include documenting both physical and functional features of buildings and or related building systems.



Eliminate Paper... use our Technology Options



=



www.caddfx.com

Summary

CaddFX Design Services offers all building documentation services to update floor plans and related infrastructure systems, essential for multiple purposes.

How is this possible?

CaddFX Design Services employs a staff of seasoned professionals with a variety of backgrounds that include Facility, Design, Engineering, IT & Security.

What are the purposes & who utilizes this data?

Responding to a crisis situation, maximize efficiency, increase accuracy, and minimize costs, while supporting...

- ✓ Engineering
- ✓ Facility Mgmt.
- ✓ Maintenance
- ✓ Building Owners
- ✓ First Responders
- ✓ Police/Fire /EMS
- ✓ Safety and Security
- ✓ Accounting and Control Groups



What is the process?

- ✓ Gather customer requirements
- ✓ Conduct site survey w/ laser equipment
- ✓ Develop floor plans and data
- ✓ Convert paper drawings to electronic
- ✓ Consolidate multiple Floor plans
- ✓ Color Code Floor plans by zones
- ✓ Provide data in electronic format
- ✓ Import data to optional software

Technology Options

- ✓ Eliminate paper
- ✓ Crisis Management software Solutions
- ✓ Provide Facility Management software
- ✓ WEB enabled Floor Plans and data
- ✓ Data available to First Responders

CaddFX
Design & Drafting
Services

877- 422-3339

Our services and technology can help you go GREEN!

What better way is there to go green but eliminate paper in your office and save trees and energy.



Ask yourself... Can you access all of your drawings and documents in seconds?

American businesses are very focused on green initiatives. Conserving natural resources and reducing dependence on energy is just a piece of the puzzle. The elimination of paper in business is not only a way to save trees and create a good environment, but is also critical to have effective automation system in any office. The expenses associated with the printing and management of paper drawings and documents are often overlooked. Here's why...

Paper & Drawings Storage Expenses



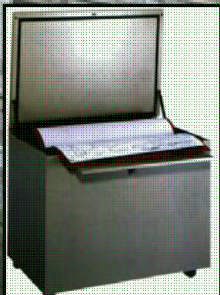
Files and supplies to create and maintain 12,500 documents (\$0.005/page) \$62.50 annually

File cabinet \$1,000.00 amortized over 10 years = \$100.00 annually

Office space rent (including services) \$200.00 per 12 sq. feet. \$200.00 annually

Cost of paper \$125.00 annually

Total Cost of Ownership of 1 file cabinet = \$487.50



Drawing Files and supplies to create and maintain 3,000 drawings (24x36 page) @ (\$0.15/page) \$450.00 annually

Cost of paper \$2,250.00 annually

Drawing cabinet \$2,500.00 amortized over 10 years = \$250.00 annually

Office space rent (including services) \$1000.00 per 72 sq. feet. \$1000.00 annually

Total Cost of Ownership of 1 drawing cabinet = \$3,950.00